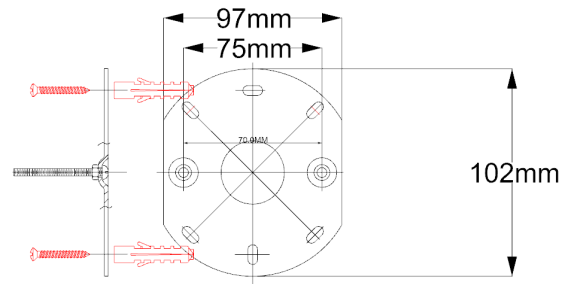


St Louis Wall Lantern Medium



Stock Code: STL2/M WB

St. Louis One light wall lantern

Product Description

The New England and St. Louis fittings take their influences from different periods dating back to pre and post 1900s. Available in a Weathered Bronze finish, these fittings use hand-blown glass and great attention to detail in their designs resulting in products that will add style to any situation.

Product Attributes

- Weight: 1.8 kg
- Fitting Height: 400mm
- Width/Diameter: 185mm
- Projection: 230mm
- Finish: Weathered Bronze
- Build Materials: Metal, Hand Blown Glass
- Max Wattage: 1 x 100W E27
- Voltage: 220-240v 50hz
- Number of lamps: One
- Bulb Included: No
- IP Rating: IP44
- Class I/II: Class I
- Product Type: Wall Lantern
- Box Dimensions: 25x30x42cm
- Barcode: EAN 5024005493600
- Anti-corrosion guarantee: 3 years
- Family: St Louis